

# LILLINGTON SCHOOLS

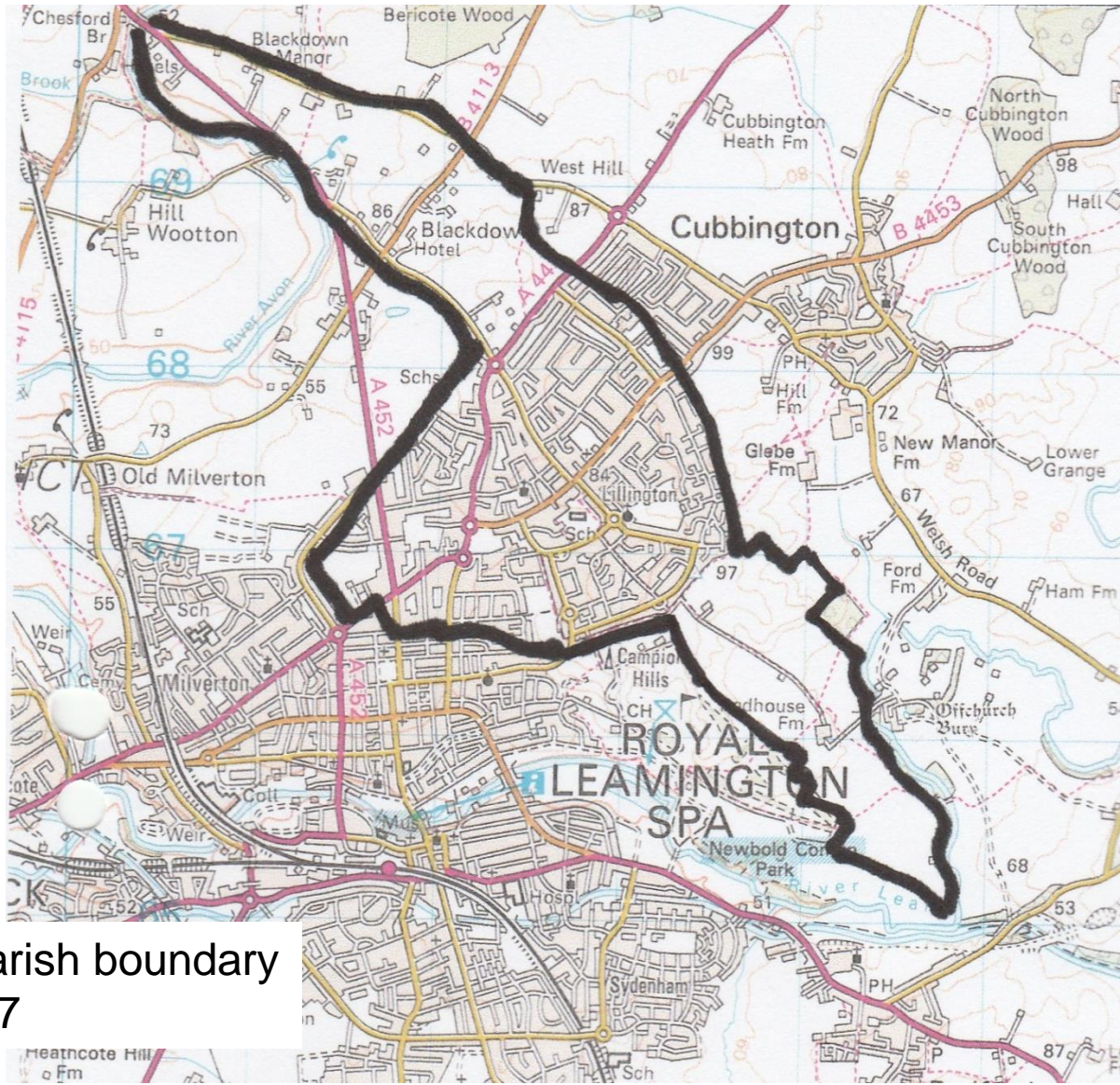
## Lillington School: The Early Years



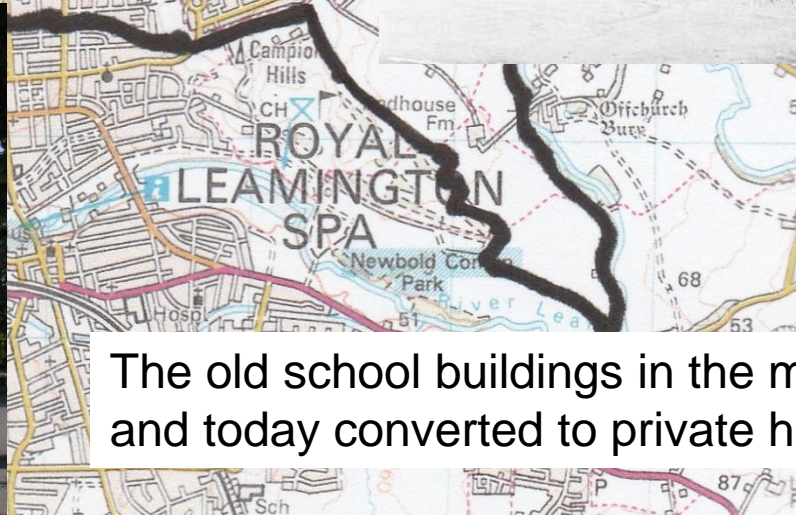
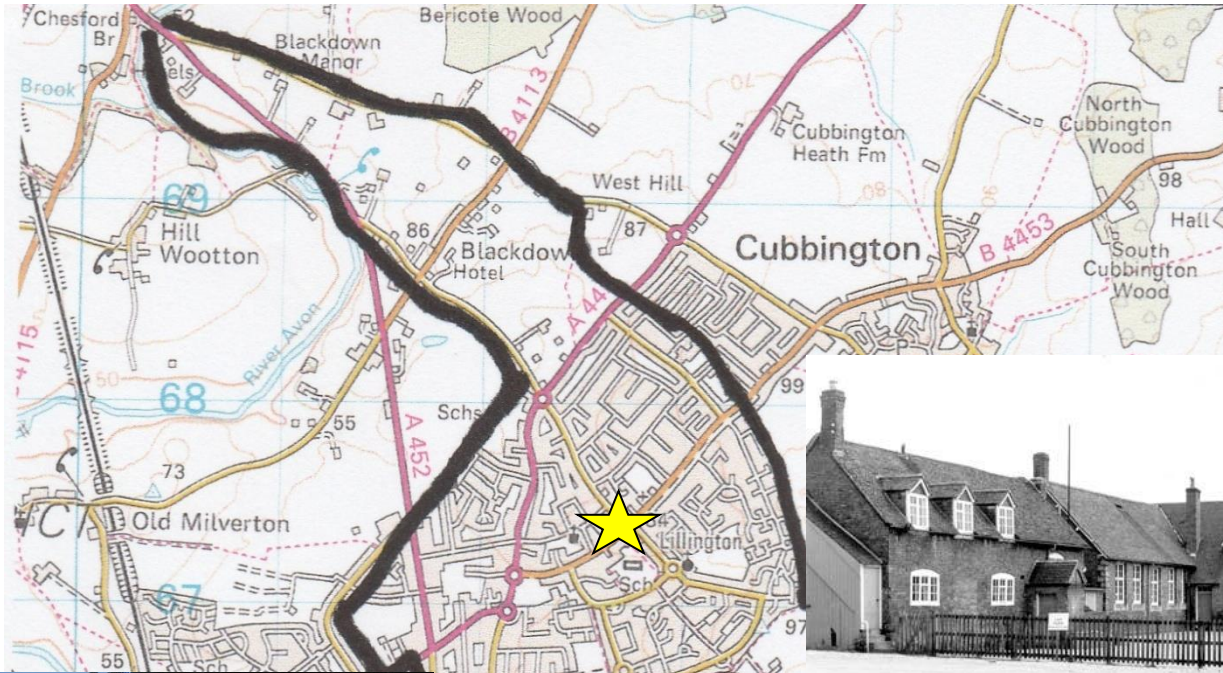
Chris Rhodes

With additional material by  
Richard Taulbut, Larry Connor, Graham Cooper,  
Les Markham, Bob Barnes and Claire Walsh.

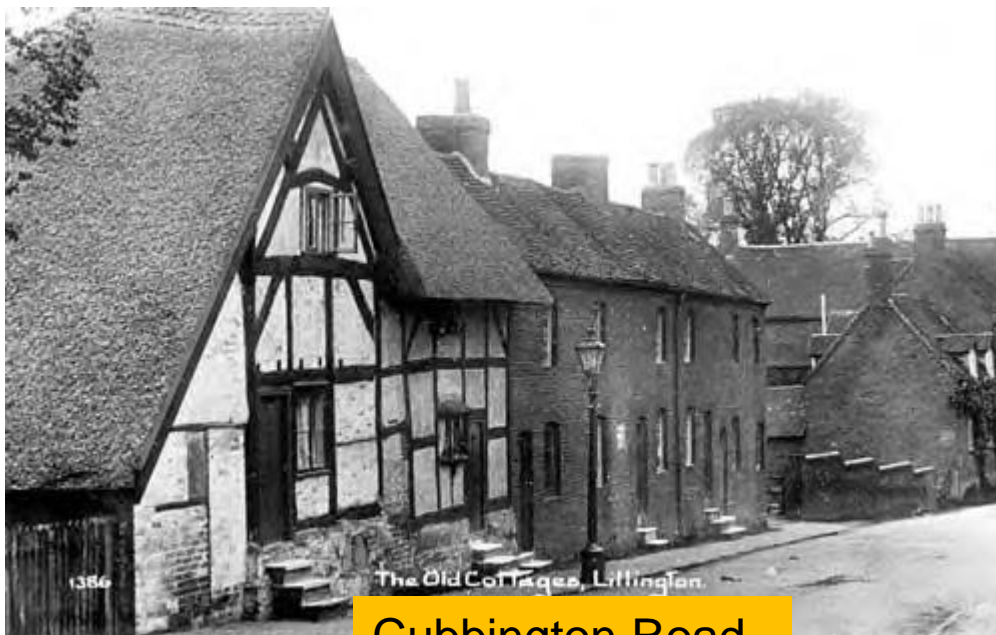
Presented to Lillington Local History Society  
6<sup>th</sup> November, 2020



Lillington parish boundary prior to 1957



The old school buildings in the mid-1960's;  
and today converted to private houses



Cubbington Road

Reading, writing, cyphering and  
knowledge of the Bible

1818  
Population 204  
Poor 43  
Sunday school 16 chn

*A Sunday school, supported by  
subscription,*

*“The poorer classes are  
certainly without  
sufficient means of  
educating their children  
in a regular way”*

*Revd John Wise, Vicar*



1829. Date for the foundation of a day school

1833 “One daily school wherein are 16 males and 17 females whose instruction is at the expense of their parents”

1839



## TITHE COMMISSION.

### NOTICE.

**T**HE TITHE COMMISSIONERS for ENGLAND and WALES *hereby give Notice*, that a COPY of the DRAFT of APPORTIONMENT of the RENT-CHARGE agreed to be Paid in Lieu of Tithes, in the Parish of LILLINGTON, in the County of Warwick, has been deposited at the School Room in the said Parish, for the Inspection of all Persons interested in the Lands or Tithes of the said Parish.

And the Commissioners *further give Notice*, that, pursuant to the Act for the Commutation of Tithes, a MEETING will be holden for the purpose of hearing any Objections to the intended Apportionment, by any Persons interested as aforesaid: and that such Meeting will be held at the School Room in the said Parish, on MONDAY, the 23rd day of September, 1839, at Eleven o'clock in the Forenoon.

By order of the Board.

E. HOVENDEN, *Secretary.*

sons interested as aforesaid: and that such Meeting will be held at the School Room in the said Parish, on MONDAY, the 23rd day of September, 1839, at Eleven o'clock in the Forenoon.



1864 New school built  
(right of picture)

The Reverend John Wise has  
commissioned ....a commodious  
school room....at a cost of £200.

*Leamington Spa Courier.*

£25,000

**1874 White's Directory of Warwickshire** : “The National School is a neat building It is supported by subscription and Miss Lucie Luck is the mistress.” Miss Luck lived over the parish room.

National Society for the education of the poor in the  
principles of the Established Church



The new school of 1864 in the centre, with the Jubilee extension [1898] to the right.

*Image: 1950s*





The level of regular attendance, standards in reading, writing and arithmetic, and girls' needlework

Schools were inspected regularly by HM Inspectors –  
and a report sent to the chairman of the managers

Annual Report of Inspector.

Form 17a.

Letters should be addressed—  
“The Secretary,  
Education Department,  
Whitehall,  
London, S.W.”

EDUCATION DEPARTMENT,

24<sup>th</sup> April 1890

At the head of Letters  
relating to this case  
write—

Lillington B.E. School.

B. County of Warwick No. 16,555

- N.B.—1.—Letters containing enclosures should enumerate them *specifically*, with a line in the margin for each.  
2.—Write clearly, on good FOOLSCAP paper of the same size as this sheet.  
3.—Applications relating to different Schools are to be made in separate letters.

Rev. SIR,

The Report of Her Majesty's Inspector upon this School has  
been examined, and payment of the grant allowed, according to the following  
Schedule (*over*), will be made in the course of a few days.

17a  
16555

Lillington C. C. School.  
(Warwick).

SUMMARY OF THE INSPECTOR'S REPORT ON THE SCHOOL AND REMARKS (IF ANY) TO BE MADE.

Mixed School. "Discipline and singing by note good. Songs very good. The work of the lower Standards is well done and the writing on paper is of good quality. Arithmetic good in the lower Standards and pretty good in the third, fourth and fifth Standards, very moderate in the sixth Standard. Grammar pretty good in all the Standards except the fourth, where it is scarcely fair. Needlework fair. General Efficiency just good enough to deserve the higher Principal Grant"

Infants' class. "Discipline and singing by note satisfactory. Instruction

Form 17a.

EDUCATION DEPARTMENT,

24<sup>th</sup> April 1890

\_\_\_\_\_ School.

Warwick No. 16,555

with a line in the margin for each sheet.  
to letters.

The Inspector upon this School has allowed, according to the following few days.

1890  
Roll 75



Children entered for testing 52

Passes in reading 49

Passes in writing 50

Passes in arithmetic 47

Grant £65. 6s. 6d.

## **Kate Ablett**

Kate came to the school in 1889 as a fourteen year old pupil-teacher. She and her younger sister Lucy had moved to Cubbington to live with their aunt and uncle.

The 1891 report notes that Kate had “passed fairly, but should attend [more?] to Knowledge of Method.”

Sadly, the 1892 report records that she had “failed to pass her examination.”

She married Charles Wrench, a Leamington stone mason, in 1900. The 1911 census shows them living in London, and that they had two sons and two daughters. Kate’s three times granddaughter .....



1886 I am glad to find an improvement in the elementary work. Spelling is not good, nor is much intelligence shown in the Reading, but writing has improved, and arithmetic is intelligently done. The girls' sew nicely and knot well. Order is good. The Infants do but fairly.



1887 The instruction, though nowhere brilliant, is generally sound. Writing is very fair; Arithmetic seems to have been well taught, but the children work inaccurately. Infants have been fairly and kindly taught, but their instruction does not go far.

1888 School is in good order and well taught...Singing is pleasing. Knotting is very good, and the plain needlework fair. Reading is not very strong, and is poor in the third standard.

As a church school, Lillington also had an annual inspection by the Diocese of Worcester



### **Knowledge of**

- Old Testament
- New Testament
- Catechism
- Prayer Book

### **Repetition of**

- Scripture
- Hymns, Collects
- Catechism

### **Writing**

Writing from memory

DIocese of Worcester.  
 RURAL DEANERY of Stourbridge

(National Society's Form No. 10.)

REPORT OF RELIGIOUS INSTRUCTION.

Stourbridge SCHOOL.

Stourbridge DEPARTMENT.

Inspected Nov 14 1898

Rev. Mr. Spry Correspondent

*On Book 116  
 As att. 94.  
 March 1088*

I.—SPECIAL RESULTS OF EXAMINATION IN THE SEVERAL CLASSES AND SUBJECTS.

		DIVISION			
		I.	II.	III.	IV.
NO. PRESENT		20	47	33	
Knowledge of	Old Testament	* Vg	Vg	Vg	
	New Testament	* Vg	Vg	Vg	
	Catechism	* <del>Vg</del>	Vg	Vg	
	Prayer Book <i>(By the Rev.)</i>	*	Vg	Vg	
Repetition of	Scripture	*			
	Hymns, Collects, &c.	*			
	Catechism	*			
Writing	Abstracts, or Writing from Memory	*	Vg	Vg.	

\* (V.G.—Very Good. G.—Good.) (V.F.—Very Fair. F.—Fair.) (M.—Moderate. B.—Bad.)

2.—GENERAL REPORT.

*This school has passed a most excellent inspection & examination. In the report show the repetition of the Lord's Prayer & very clear. The work throughout the school has particularly been & it is concluded that in each of our divisions very great progress has been taken and it is...*

		I.	II.
NO. PRESENT		20	47
Knowledge of	Old Testament	* Vg	Vg
	New Testament	* Vg	Vg
	Catechism	* <del>Vg</del>	Vg
	Prayer Book <i>(By the Rev.)</i>	*	Vg
	Scripture	*	
Repetition of	Hymns, Collects, &c.	*	
	Catechism	*	
	Writing	Abstracts, or Writing from Memory	* Vg

1898 This school has passed a most excellent inspection... Great pains have been taken with the whole of the Religious Instruction



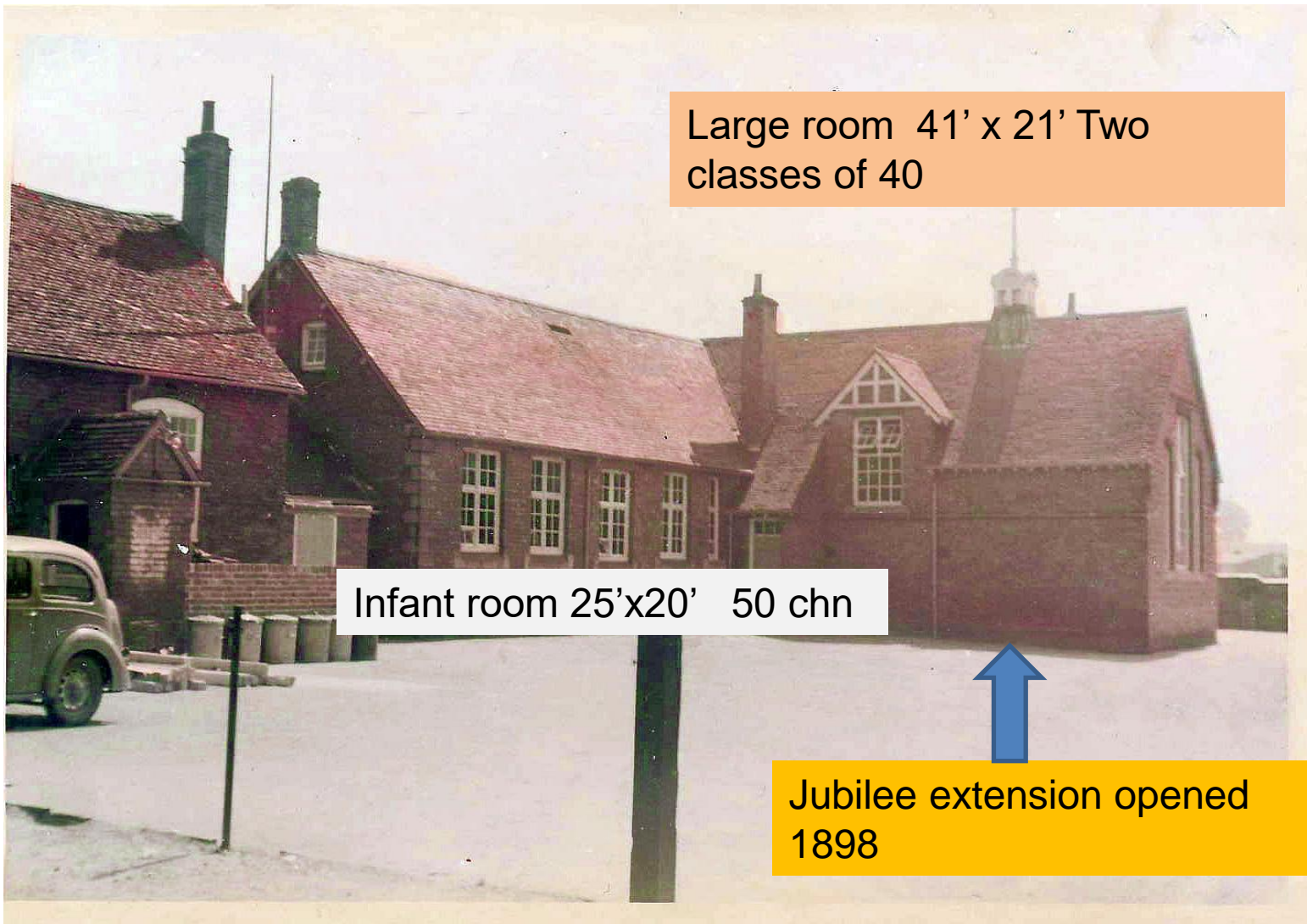
1880 School leaving age 10

1889 School leaving age  
raised to 12

1892 School roll of 90

1897 Jubilee Plaque





Large room 41' x 21' Two classes of 40

Infant room 25'x20' 50 chn

Jubilee extension opened 1898

Image 1950s



LILLINGTON  
SOCIETY





Miss Catherine Cutter?

## Catherine Cutter 1861- 1946

Certified teacher 1882 as pupil-teacher  
Started at Lillington 1883

Headmistress 1892-1924

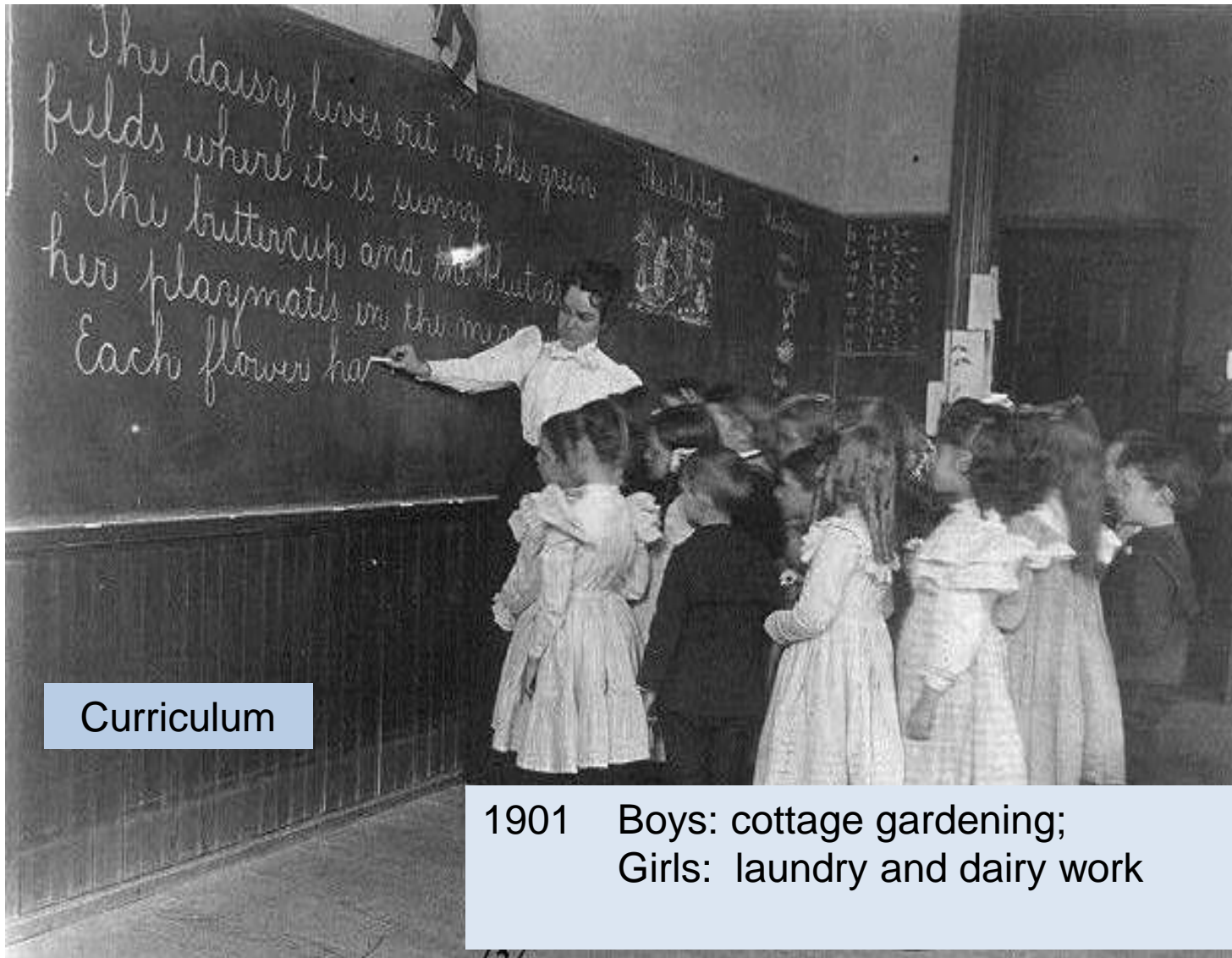
Salary [1900] £105 from total budget of  
£239/13/10d. Salary raised by £5 in 1913

Lived at 22 Farm Road. 1901 Census. Mother 75;  
Mary Taylor domestic 13yrs



Alice Duggins, pupil teacher 1899. Salary £7 per annum. Could be dismissed without notice for “idleness, disobedience, or immoral conduct of a gross kind.”

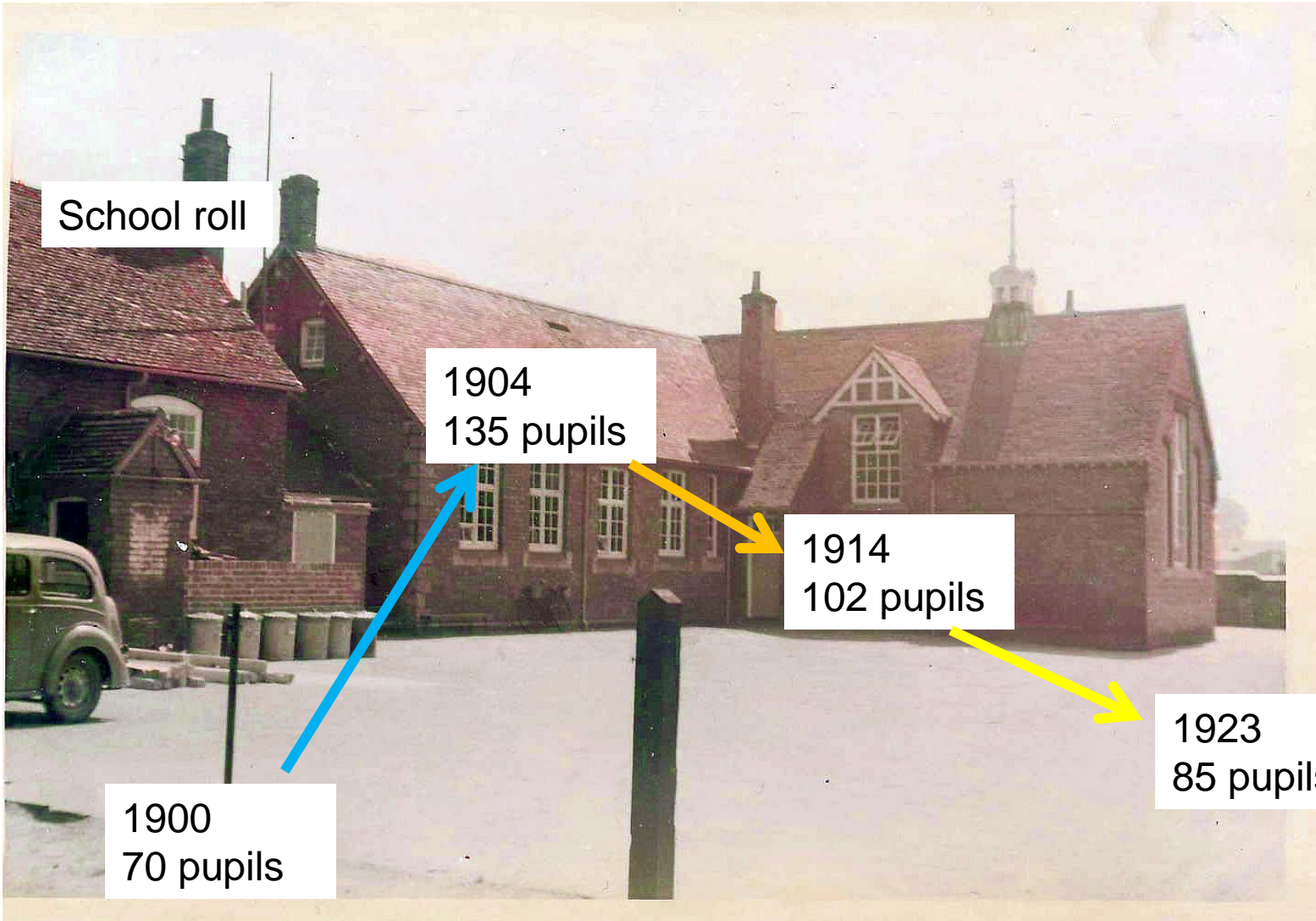




Curriculum

1901    Boys: cottage gardening;  
          Girls: laundry and dairy work





School roll

1904  
135 pupils

1914  
102 pupils

1923  
85 pupils

1900  
70 pupils

## Board of Education HMI reports



1918

“Work in the top division was poor in quality and, in many cases, were badly written and contained bad spelling mistakes”

1922

“The present headteacher had had charge of the school for many years. The discipline is very good....Thrift is encouraged and the contributions to the National Savings Association are substantial.”

1923 “The Mistress has presided over this school with tact and courage and unfailing interest in the welfare of the children.”



1924 Miss Clementina Evans Headmistress.

1926

“Would it not be wise to transfer the older boys to larger schools?”

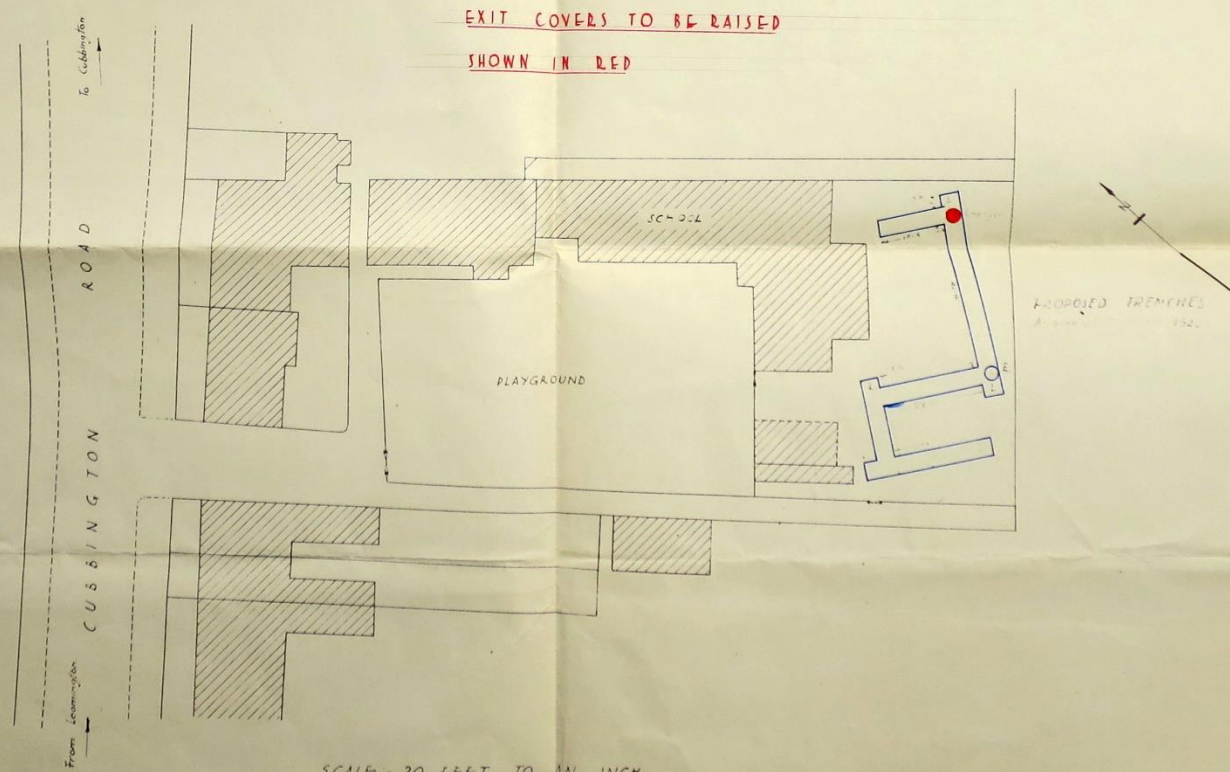
1932

“Placid atmosphere...Children are eminently teachable...but their school life appears rather uneventful.”

“These things were discussed with the head teacher, who showed herself well able to appreciate a different point of view.”

BOROUGH OF ROYAL LEAMINGTON SPA  
A. R. P. SCHEME - SCHOOL SHELTERS  
LILLINGTON SCHOOL

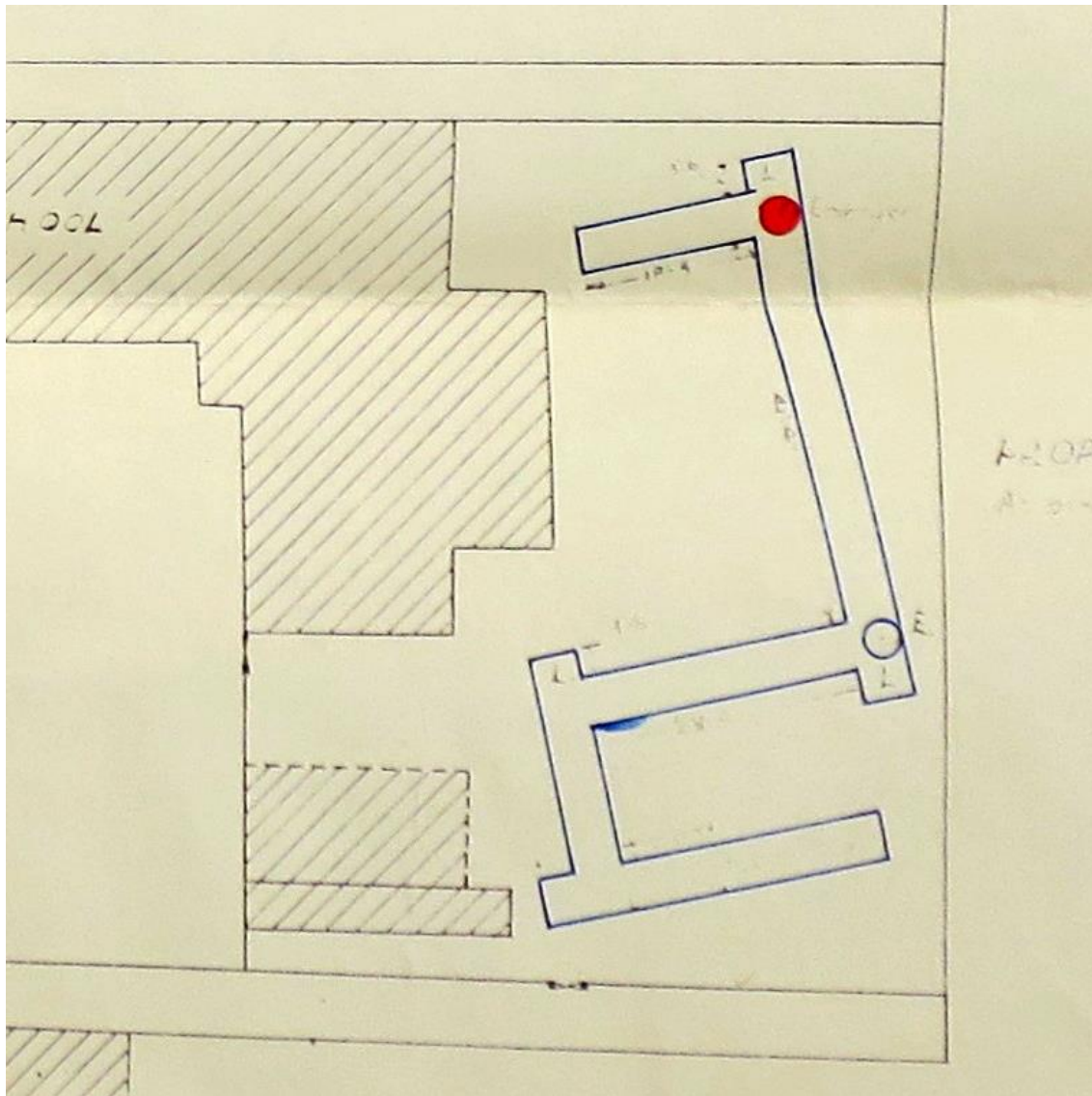
1939

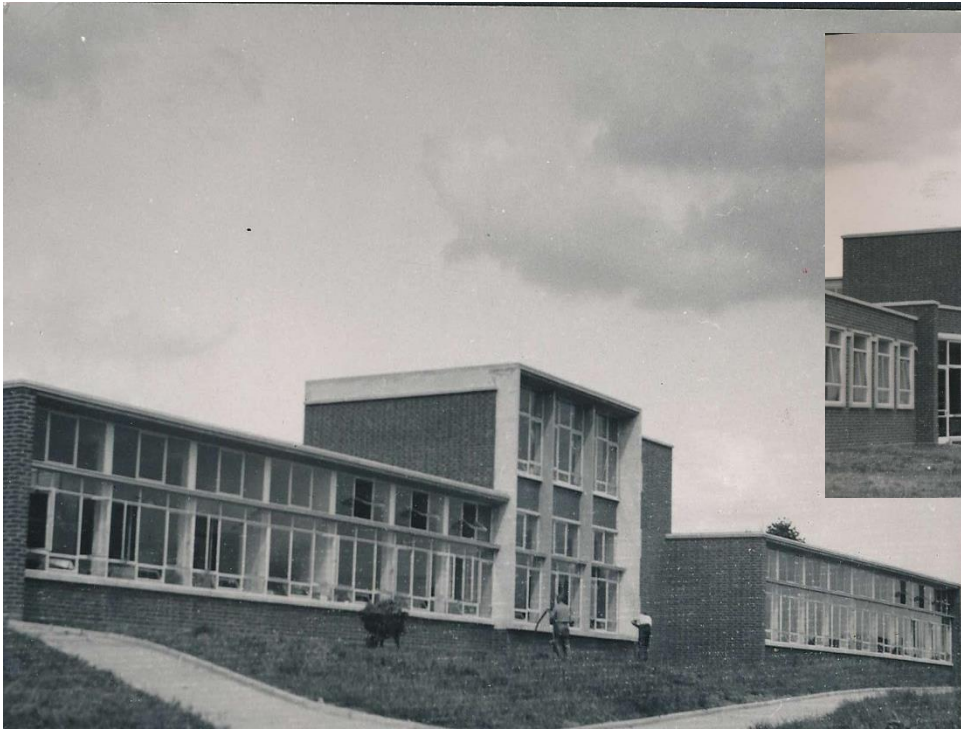


SCALE - 20 FEET TO AN INCH

PLAN No 144/31

J. J. J. J. Assoc. M. Inst. C. E.  
Borough Engineer & Surveyor  
Leamington Spa Oct. 1939





1952 New County Junior School built on McGregor land.

Mr Allen. 252 on roll. Infant School remains in the "old" school as VC School.

# Lillington schools affected by three potential knock out blows



Huge growth in population.

The Cubbington Road DIVIDE!

First and Middle schools

1988 Education Act.

*School budgets; National Curriculum, Tests, Ofsted, end of Middle Schools Local Management*

Manor Hall ?

Telford

# LILLINGTON SCHOOLS

## Lillington School: The Early Years



If you have any material which could be included in future presentations or have any questions please contact Chris Rhodes 01926 330057 or email:

[treasurer@lillingtonhistory.org](mailto:treasurer@lillingtonhistory.org)